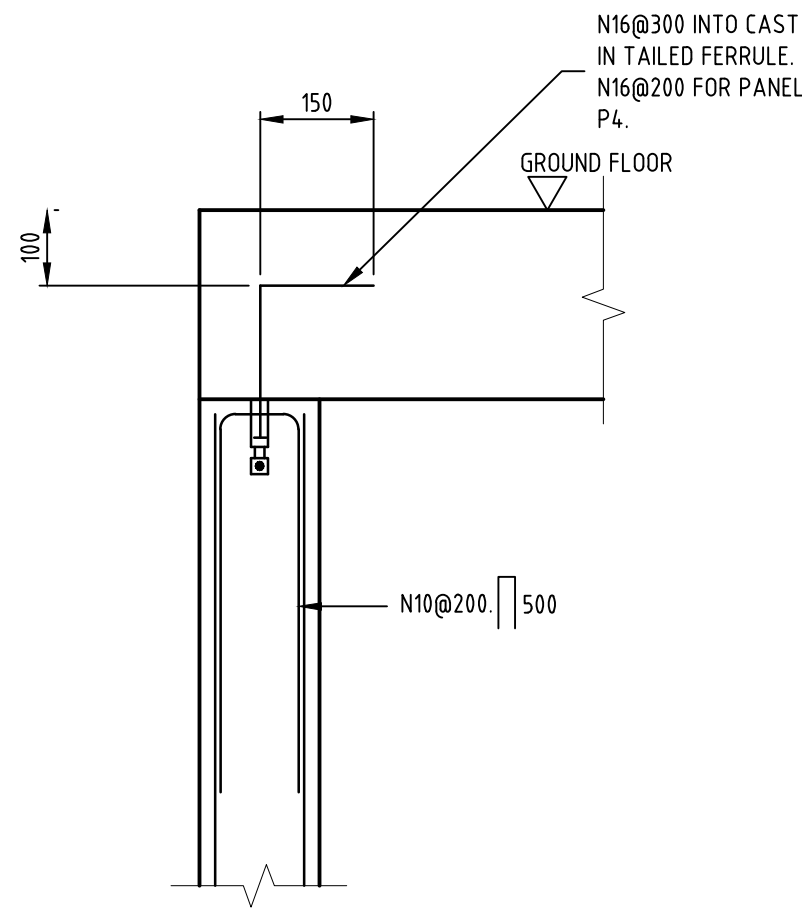


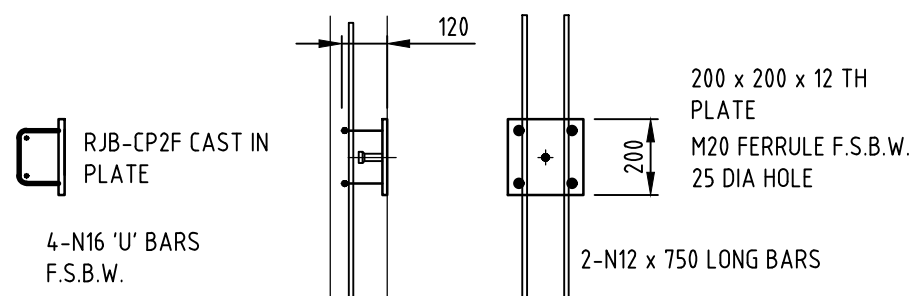
TYPICAL PANEL DETAIL

TYPICAL PRECAST PANEL ELEVATIONS P3, P4

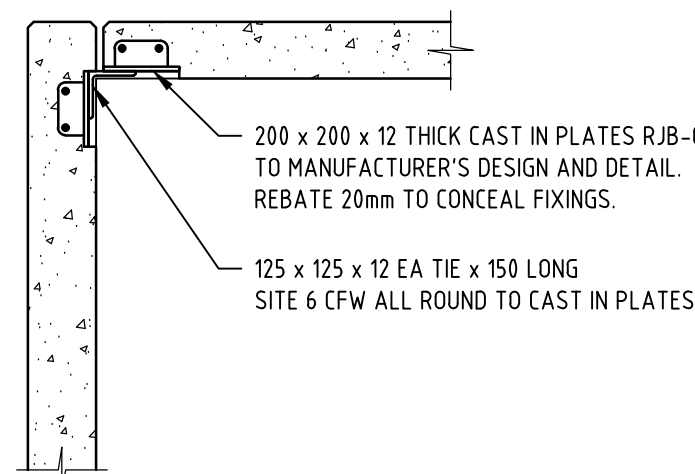
- REINFORCEMENT SL102 EACH FACE
- 1N16 EACH FACE TO PERIMETER
- PROVIDE N10@200 BARS TO PERIMETER



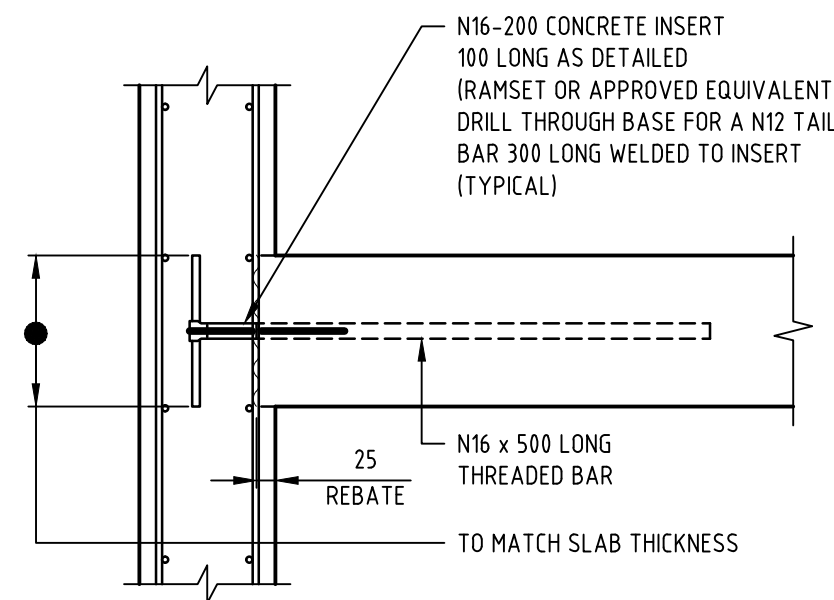
SECTION 1
SCALE 1:20
AT ROOF SLAB.



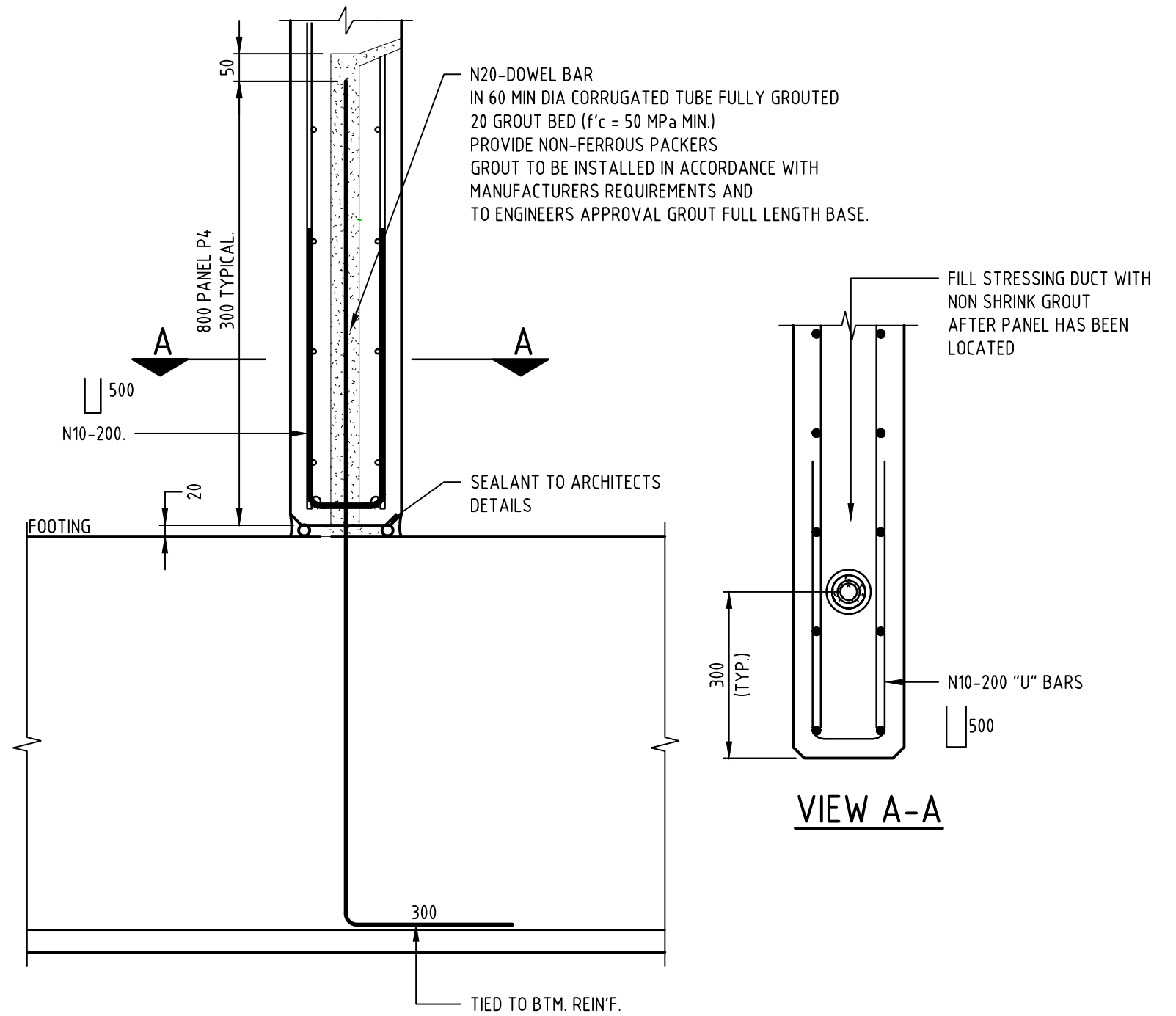
RJB-CP2F CAST IN PLATE



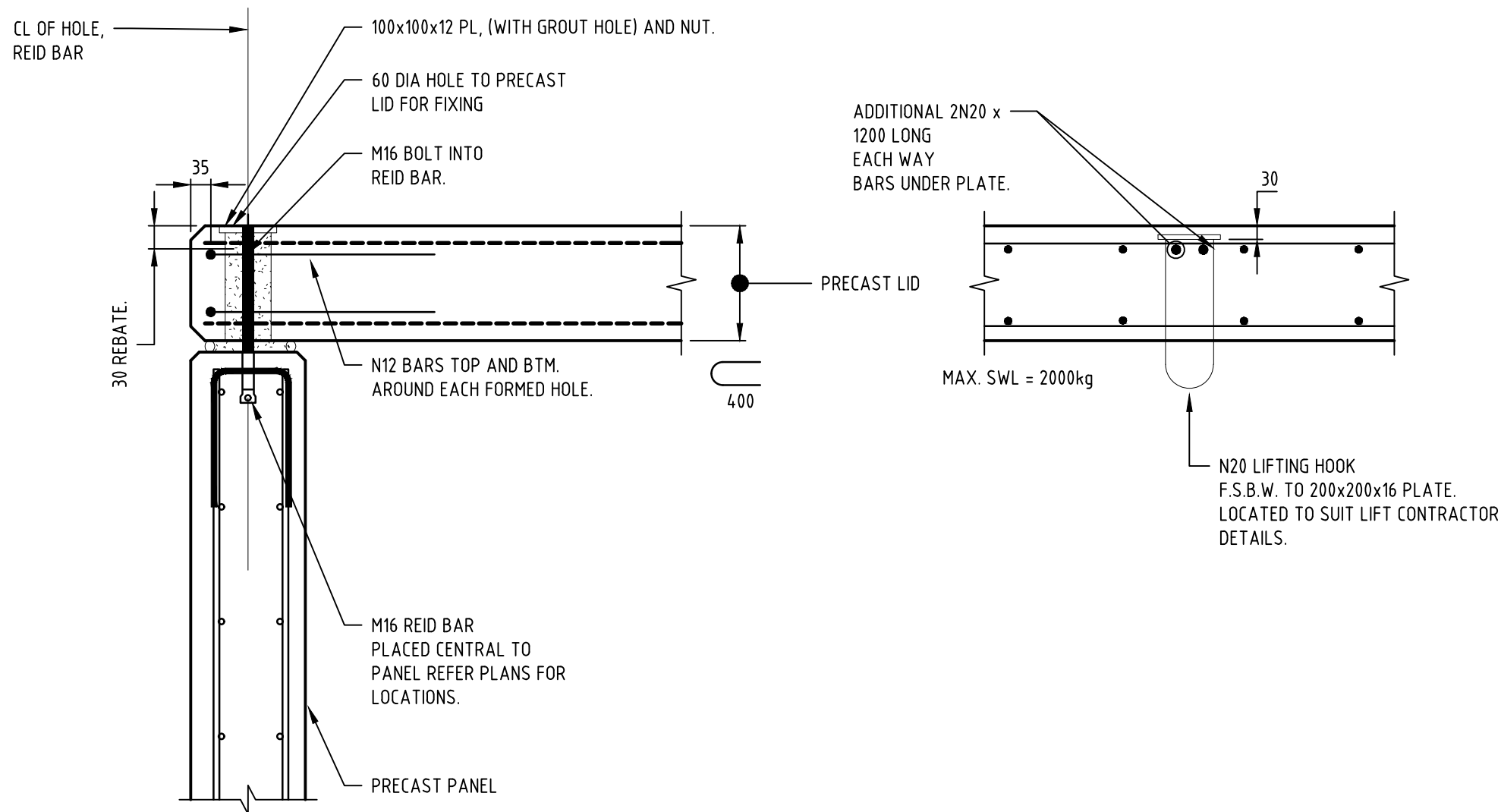
FIXING TYPE - CP1 TYPICAL PANEL
TO PANEL CORNER CONNECTION



TYPICAL CAST IN FERRULE DETAIL TO FLOOR
& STAIR LANDINGS

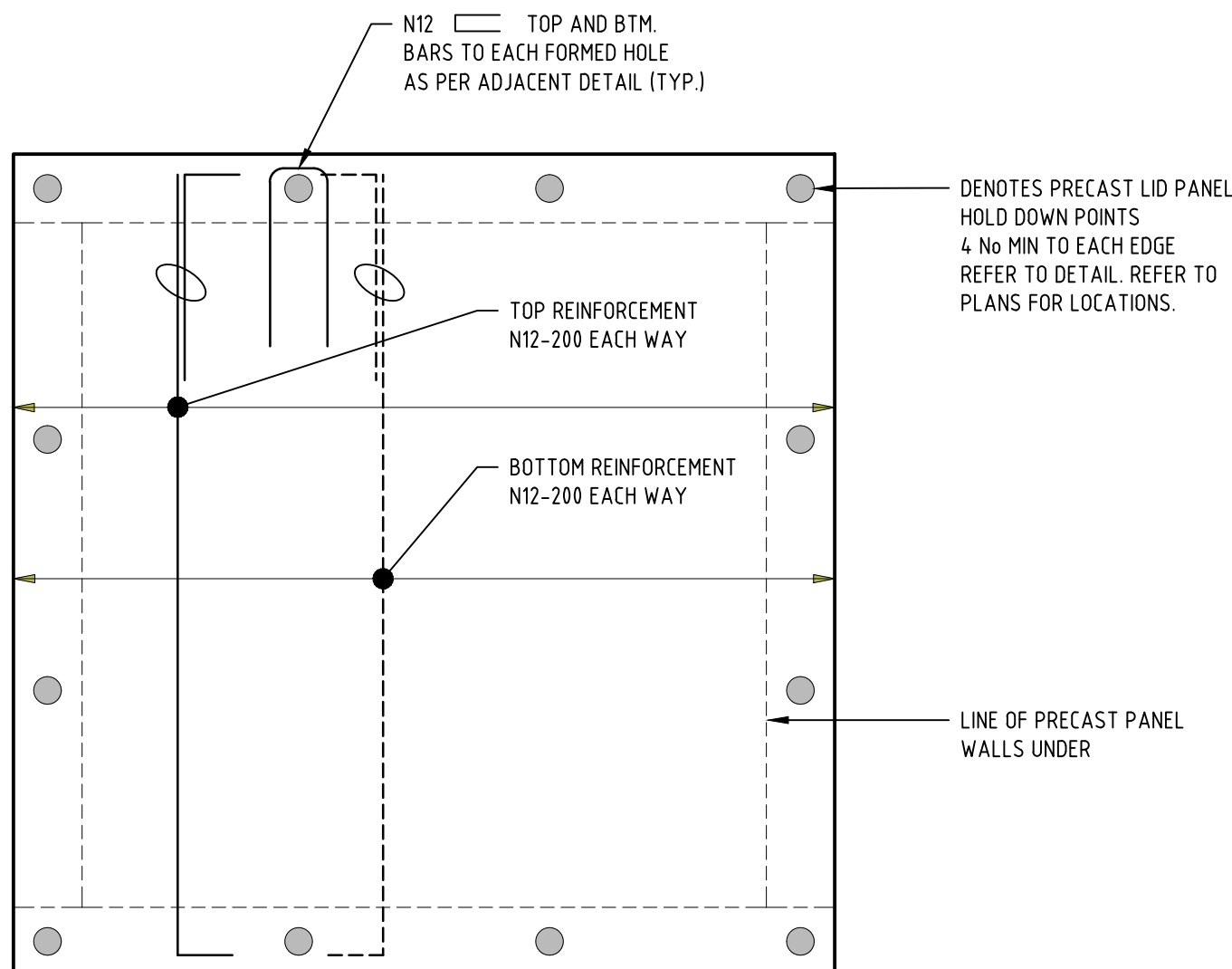


TYPICAL PRECAST PANEL TO BASE DETAIL
DETAIL AT BASE OF LIFT AND STAIR WALLS



TYPICAL PRECAST LID PRECAST PANEL
HOLD DOWN DETAIL

LIFTING HOOK DETAIL
SCALE - N.T.S



TYPICAL PRECAST LID PLAN DETAIL
200 THICK PRECAST SLAB - LIFT
150 THICK PRECAST SLAB - STAIR
FOR NUMBER AND LOCATION OF
DOWELS REFER PLANS S61 & S62
FOR EXTENT.

PRELIMINARY ISSUE
NOT FOR CONSTRUCTION

DRAWING: J:\S34\308\254\280\3 STRUCTURAL DRAWINGS\S34\308-254\280-530.DWG (LAST SAVED ON: 28/08/17 8:58:32 AM) PLOTTED ON: 28/08/17 9:23:15 AM BY: STEPHEN PLUMMER
THIS DRAWING IS COPYRIGHT TO FMG ENGINEERING. NO PART OF THIS DRAWING, INCLUDING THE WHOLE OF SAME, SHALL BE USED FOR ANY PURPOSE OR SITE OTHER THAN WHICH IT WAS PREPARED, NOR BY ANY THIRD PARTY, WITHOUT THE PRIOR WRITTEN CONSENT OF FMG ENGINEERING.

REV	DESCRIPTION	DATE	INIT	APP	
PD	BUILDING PERMIT SUBMISSION	28/8/17	SP	JH	
PC	PRELIMINARY ISSUE	17/8/17	SP	JH	
PA	PRELIMINARY ISSUE	28/7/17	SP	JH	
PA	PRELIMINARY ISSUE	23/6/17	SP	JH	

CONTRACTORS MUST SET OUT ALL WORK AND VERIFY ALL CONDITIONS, LEVELS AND DIMENSIONS ON SITE PRIOR TO COMMENCEMENT OF ANY WORK OR MAKING OF ANY SHOP DRAWINGS WHICH MUST BE SUBMITTED AND APPROVED PRIOR TO ANY MANUFACTURE.					
ALL WORK MUST BE EXECUTED IN ACCORDANCE WITH THE RULES, REGULATIONS, BY LAWS AND REQUIREMENTS OF ALL AUTHORITIES HAVING JURISDICTION OVER ANY PART OF THE WORK.					
ELECTRONIC COPIES OF THIS DRAWING ARE NOT TO BE USED FOR DIMENSIONAL SETOUT.					

FMG Engineering

Level 1, 2 Domville Avenue
Hawthorn Vic 3122
fmgeengineering.com.au

P 03 9815 7600
F 03 9815 7602
ABN 58 083 071 185



CIVIL | STRUCTURAL | ENVIRONMENTAL | GEOTECHNICAL | BUILDING ASSESSMENT & FORENSIC
SOIL & MATERIAL TESTING | HOUSING | COMMERCIAL | PROJECT MANAGEMENT | SURVEY

CLIENT
C & K ARCHITECTURE
PROJECT TITLE
PROPOSED RESIDENTIAL DEVELOPMENT
SITE ADDRESS
261 - 263 BALWYN ROAD
BALWYN NORTH, VIC 3104
DRAWING TITLE
TYPICAL PRECAST DETAILS

DESIGNED	JH	DRAWN	SGP
CHECKED	JH	NO. OF SHEETS	
SCALE	@A1	DATE STARTED	19/6/2017
AS SHOWN		SITE ID & JOB No.	S34-308-254280
DRAWING No.		REV.	
	S90		PD